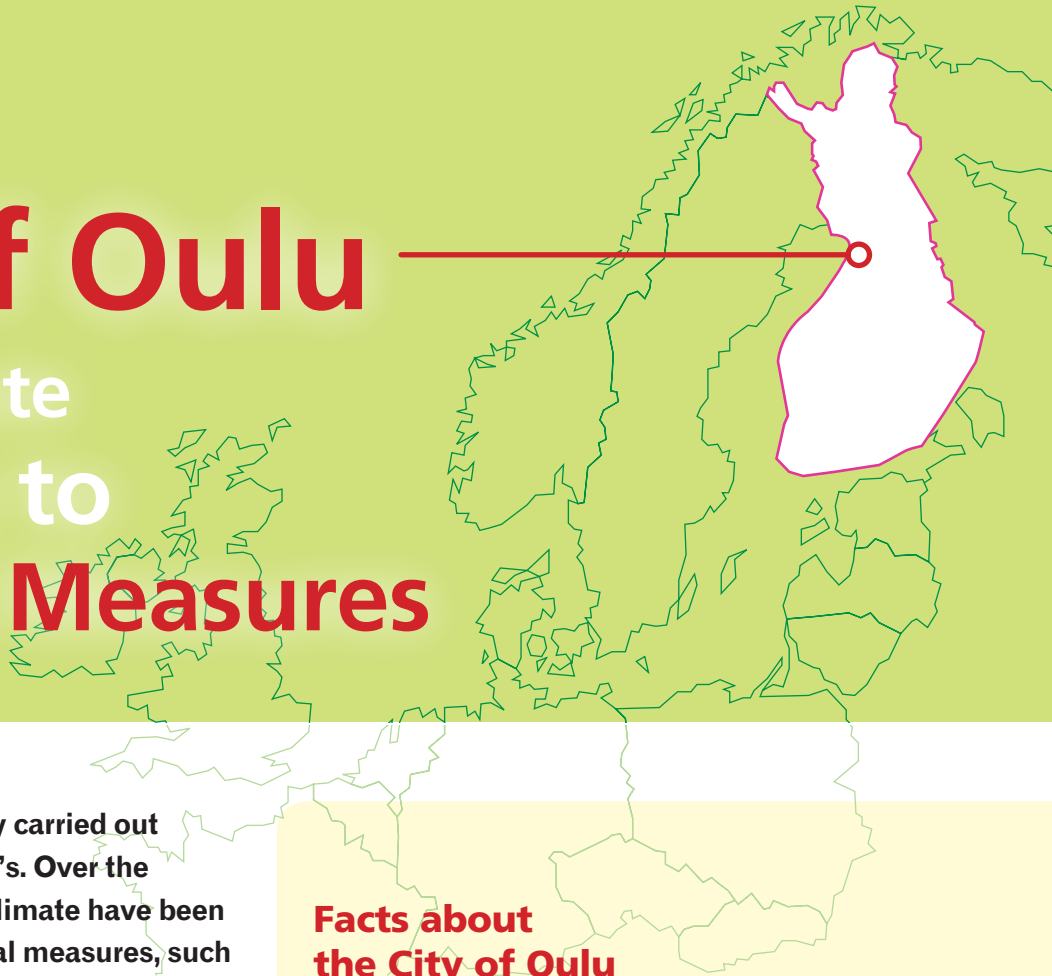




# City of Oulu

## From Climate Strategy to Practical Measures



The City of Oulu has actively carried out climate policy since the 1990's. Over the years, issues related to the climate have been closely connected to practical measures, such as the joint production of electricity and heat, the collection and utilisation of landfill gas, and the extensive cycling route network.

According to the climate strategy of the Oulu region, adopted in 2009, the City of Oulu is committed to doing its bit to slow down climate change by permanently cutting down greenhouse gas emissions. The City of Oulu signed the Covenant of Mayors in 2011. It then pledged to curb its greenhouse gas emissions by a total of 20% by 2020.

### Facts about the City of Oulu

- Population 190,695 (2013), 5th largest city in Finland
- Surface area 3,000 km<sup>2</sup>
- One of the fastest growing urban areas in Finland
- Has the youngest population of all cities in Europe, with an average age of 34 years – growing by 2,000 inhabitants per year
- Founded by King Charles IX of Sweden in 1605
- The name Oulu comes from a word in the Sami language, meaning floodwater

### LOCAL AGREEMENTS AND COMMITMENTS

1995	European Sustainable Cities and Towns, the Aalborg Charter.
1997	Joining the municipal climate campaign City of Oulu, Sustainable Development Policy.
2007	City of Oulu, Urban Strategy 2015 Energy Efficiency Agreement 2008-2016.
2009	<b>Climate Strategy for the Oulu Region.</b> Eurocities Climate Change Declaration.
2010	Climate strategy adopted as one of the five development programmes of the City of Oulu.

	The management of projects supporting climate strategy. Environmental Policy "Oulu – Growing in a Sustainable Way".
2011	Energy policy framework of the City of Oulu. Finnish Climate Network of Mayors. Covenant of Mayors.
2012	Energy-Smart Built Environment 2017, Oulu's ERA17-roadmap. Sustainable Energy Action Plan (SEAP) submitted to CoM.

# Climate change mitigation in Oulu

Urban strategy

Environmental policy: environmental goals

Strategies, programmes and commitments supporting environmental policy

Environmental programmes and systems

Annual eco balance sheet

Climate related communications and advice

Participating in campaigns and events: Earth Hour, European Mobility Week, Energy Saving Week etc.

## Oulu Region Climate Strategy: Permanent decrease in greenhouse gas emissions

Energy efficiency pact

Action plan for 2006-2016

The **target** is to save 9% in the City's consumption of heat, electricity and transport fuels (16.64 GWh).

Energy efficiency surveys of buildings, implementation of measures

Energy-saving competitions for schools and kindergartens

Climate Network of Mayors

The six largest Finnish cities as forerunners and pioneers in municipal climate issues

Ten joint climate initiatives related to building, supporting climate protection activities of residents and the operations of the cities themselves.

Proactive quality control for new buildings

Lowemission cars

Ecosupport activity

Covenant of Mayors

Sustainable Energy Action Plan (SEAP)

The **target** is to curb emissions by 20%

Efficient land use and traffic planning

Better utilisation of waste

Cutting down energy consumption through counselling

ERA 17

Operating model and guidelines for the energy-smart built environment

Energy maps: wind power and geothermal energy

Climate impact assessment of alternative zoning plans

Training for builders and renovators

Cooperation projects

Climate programme of the City of Oulu

Climate counselling for residents

Launching of eco-support activity

Increasing the use of renewable sources of energy

Land use and urban structure

Energy production

Buildings and construction

Traffic

Energy consumption by public services

Purchases and consumption

Increasing awareness

New technologies and innovations

Financial incentives

# Greenhouse gas emissions in Oulu

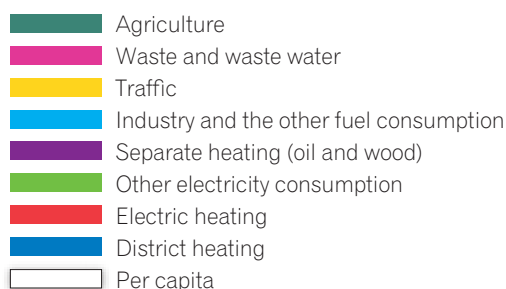
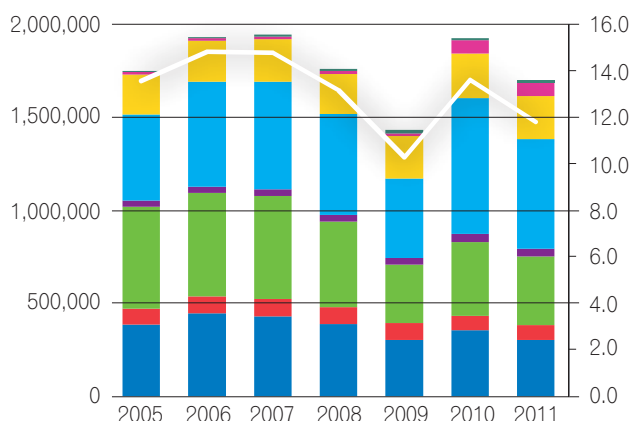
## Total emissions

The greenhouse gas emissions of the City of Oulu in 2011, if converted in CO<sub>2</sub>, made up a total of about 1,700,600 tonnes (CO<sub>2</sub>-equivalent), which amounts to 11.8 tonnes per capita. Total emissions consist of the emissions by industry, residents and services. Industrial emissions are regulated by international treaties and the emissions trading system.

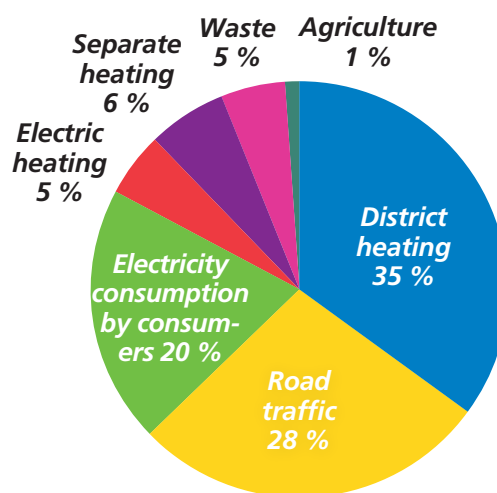
## Greenhouse gas emissions by residents and services

Greenhouse gas emissions without industrial emissions in 2011 totalled approximately 797,000 tonnes, which amounts to 5.5 tonnes per each resident.

The largest part of emissions is caused by district heating, followed by transport and the consumption of electricity.



Total greenhouse gas emissions and emissions per capita 2005-2011 (method of calculation: HILMA). The amount of emissions and annual variation depend on active measures to decrease the release of emissions as well as the weather and fuels used in energy production, financial trends affecting the industry and other events in society.



Distribution of greenhouse gas emissions, excluding the industry in 2011 (CO<sub>2</sub> report).

**A representation of weekly CO<sub>2</sub> emissions in the city of Oulu can also be found in the form of weekly statistics on our climate pages.**

The brochure is a part of the ILMO – Oulun seudun ilmastoportti -project by **Environmental Office of the Oulu Region**.  
 Contact us: [ilmasto@ouka.fi](mailto:ilmasto@ouka.fi) | [www.ouka.fi/ilmasto](http://www.ouka.fi/ilmasto)