



## INSTRUCTIONS FOR CHILDREN'S ACTIVITY BOX

This activity box on wheels is intended for children and families. It contains entertaining activities and tasks related to *Ellen Thesleff – Kiss of the Sun* exhibition.

On the back you will find a map with the artworks mentioned in the tasks marked with different colours. You will find the materials needed for each activity in the box in a bag with a drawstring that matches the colour of the activity marker in the map. Each bag contains a laminated sheet of instructions. Please start each task by reading the instructions. If you find that something is missing from the bags, please ask the information desk for more supplies.

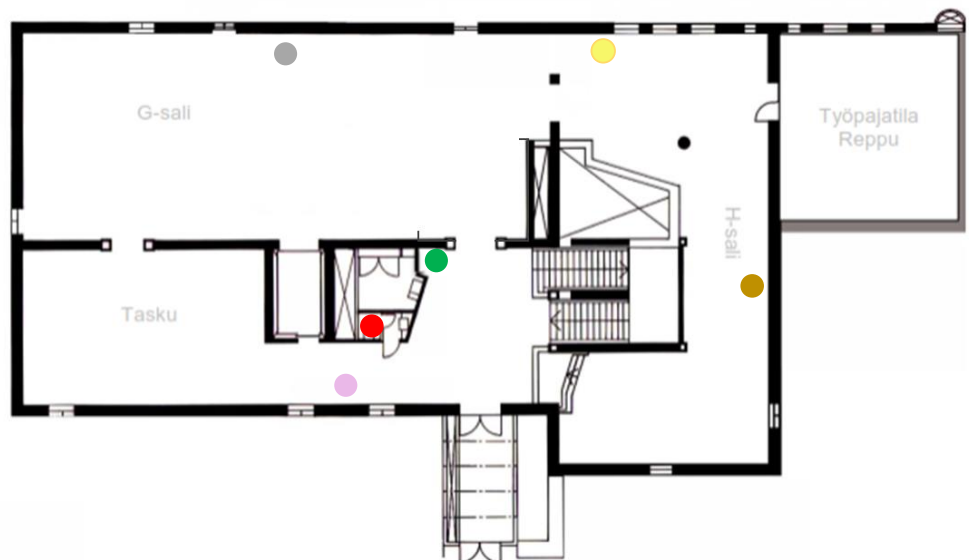
You can take the tour in any order. Please read and bear in mind the instructions below. Enjoy your visit at the museum!

- Please walk calmly in the exhibition rooms.
- Remember to keep a safe distance to the artworks.
- Please do not touch the artworks.
- Please return the cart and the supplies where you found them.

# PLAYBOX FOR CHILDREN – MAP

Ellen Thesleff – Kiss of the Sun, II. floor

- MARIONETTES 1907
- ARBOUR 1908
- GERDA 1889
- CHOPIN'S WALTZ 1942
- PLAYBOX LOCATION
- WC



## MARIONETTES (1907) – Ellen Thesleff

**Look at the artwork:** Examine the woodcut up close. There are marionette puppets in the image. Do you know what they are like? What kinds of colours are there in the artwork? How has the artist used the colours? Do you know how this picture was made?



Ellen Thesleff made woodcuts about the same subjects as her paintings. She made multi-coloured prints of the plates, pressing them with her hands using different methods, sometimes even with her feet.

A woodcut is made by engraving a block of wood, then inking the engraved block and creating a print by pressing a piece of paper against the block.

**Activity:** Create a woodcut image using the frottage (rubbing) method. Take the woodcut plates, pencils and paper from the bag. You can find a drawing board at the bottom of the box. Think which colours you would choose for a woodcut. Set the piece of paper on the woodcut block and create an image by colouring the paper lightly using a rubbing motion so that the picture on the block appears on the paper. Hold the pen in an angle parallel with the paper. Take your picture with you.

**Materials:** engraved plywood tiles, paper, pencils, drawing board

## ARBOUR (1908) – Ellen Thesleff

**Look at the artwork:** In this painting the artist has depicted the midsummer light in Italy. Examine the painting and the colours.

What kinds of colours has the artist used? What colours are used for shadows? What colours are used for the parts of the image that are illuminated by sunshine? How are the dark and the bright colours different? What would it be like to sit in the arbor?



**Activity:** Colour domino. Find a place with space on the floor. Take the wooden blocks from the bag. Distribute the blocks between the participants with the face side down. You can look at your own blocks but do not show them to others. The first player starts the game by setting one block on the floor. The others continue in a clockwise direction by setting a block next to any block with the same colour.

If the player has no suitable block left, the turn moves to the next player. The winner is the first player with no more blocks left. You can take a picture of your colour domino shape. When the game is over, please put the blocks back into the bag.

**Materials:** two-coloured wooden blocks, laminated game instructions

## CHOPIN`S WALTZ (1942) – Ellen Thesleff

**Look at the artwork:** In this painting the artist has portrayed dancing. In the early 20th century, movement, motion and dance represented freedom of movement and expression of emotions. Examine the painting. How is motion portrayed? What kind of motion does the posture suggest?



**Activity:** Motion pantomime. Find a place with space on the floor. Please be careful near artworks. Take a word card from the bag and read it. Do not tell the others which word your card has. Perform the sport or activity in your card using motion and gestures. The others try to guess which sport you are performing. Then change the performer.

**Materials:** word cards

## GERDA (1889) – Ellen Thesleff

**Look at the artwork:** In the early part of her career, Ellen Thesleff often painted people in their everyday work and free time. The person in this painting is the artist's sister Gerda, who was very close to the artist. Look at the painting. What kind of situation has the artist painted her sister in? What does the atmosphere of the image feel like? Think what the children's everyday life and spare time might have been like in the late 19th century.



**Exercise A:** Take a pen and a picture with a thought bubble. What could the person in the picture be thinking of? Draw or write your idea into the thought bubble. You can find a drawing board at the bottom of the box. Take the picture with you.

**Exercise B:** Make a drawing of a person who is important to you. Think what he or she is doing in the drawing. You can find a drawing board at the bottom of the box. Take your drawing with you.

**Materials:** pictures with thought bubbles, drawing paper, pens, drawing board