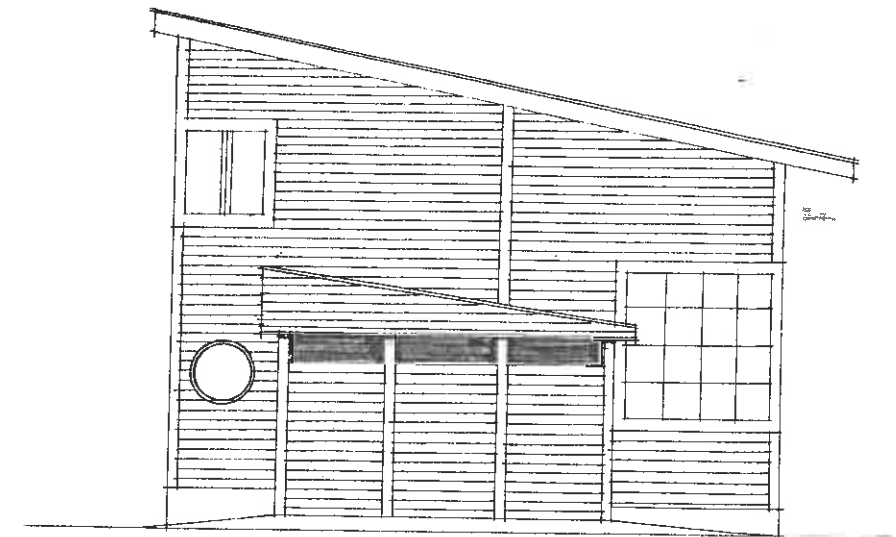
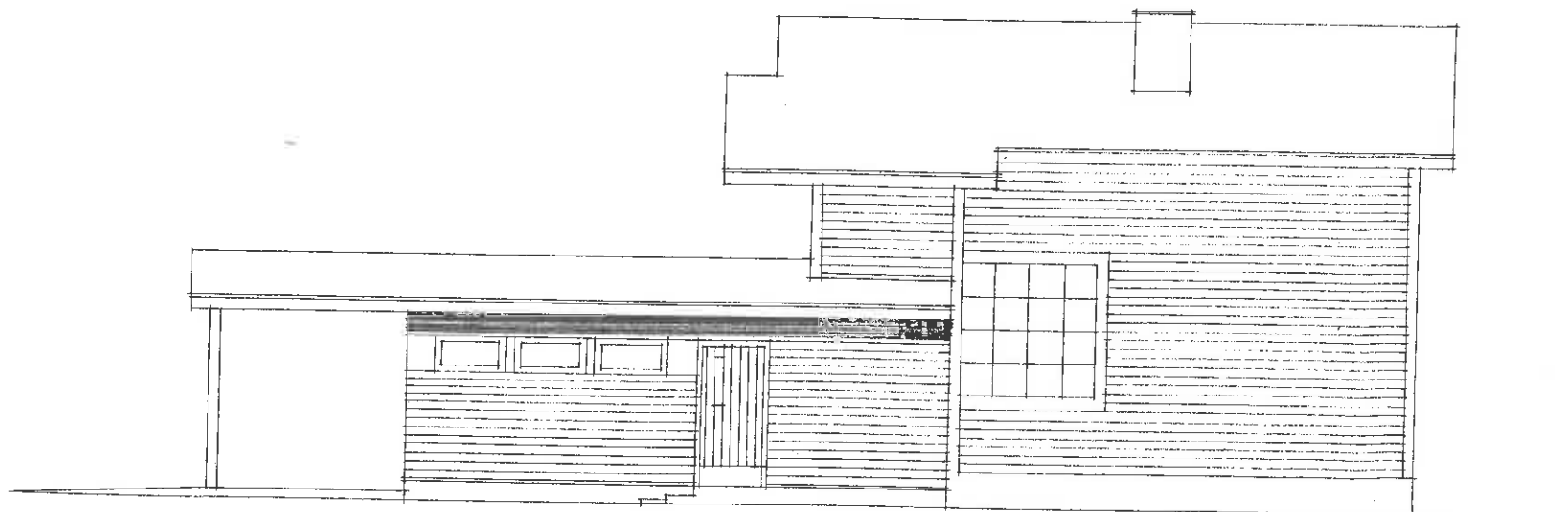


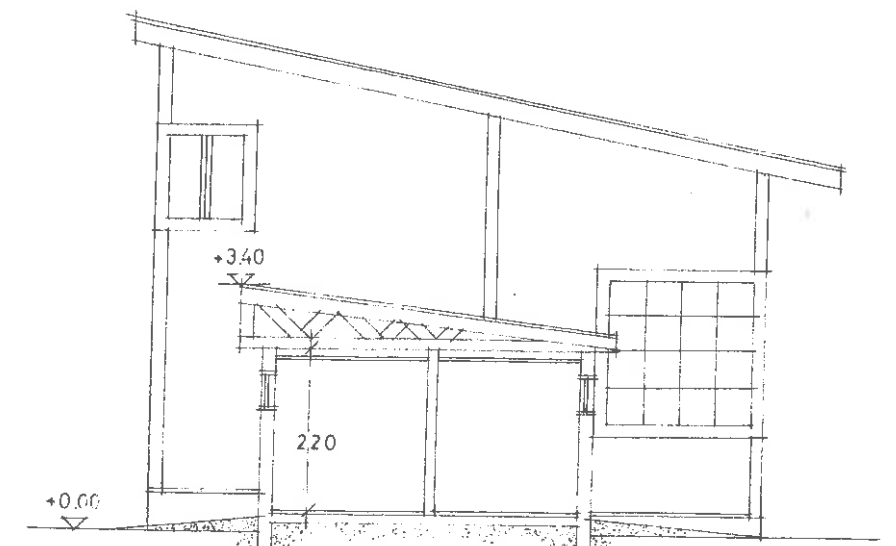
LÄNTEEN



ETELÄÄN

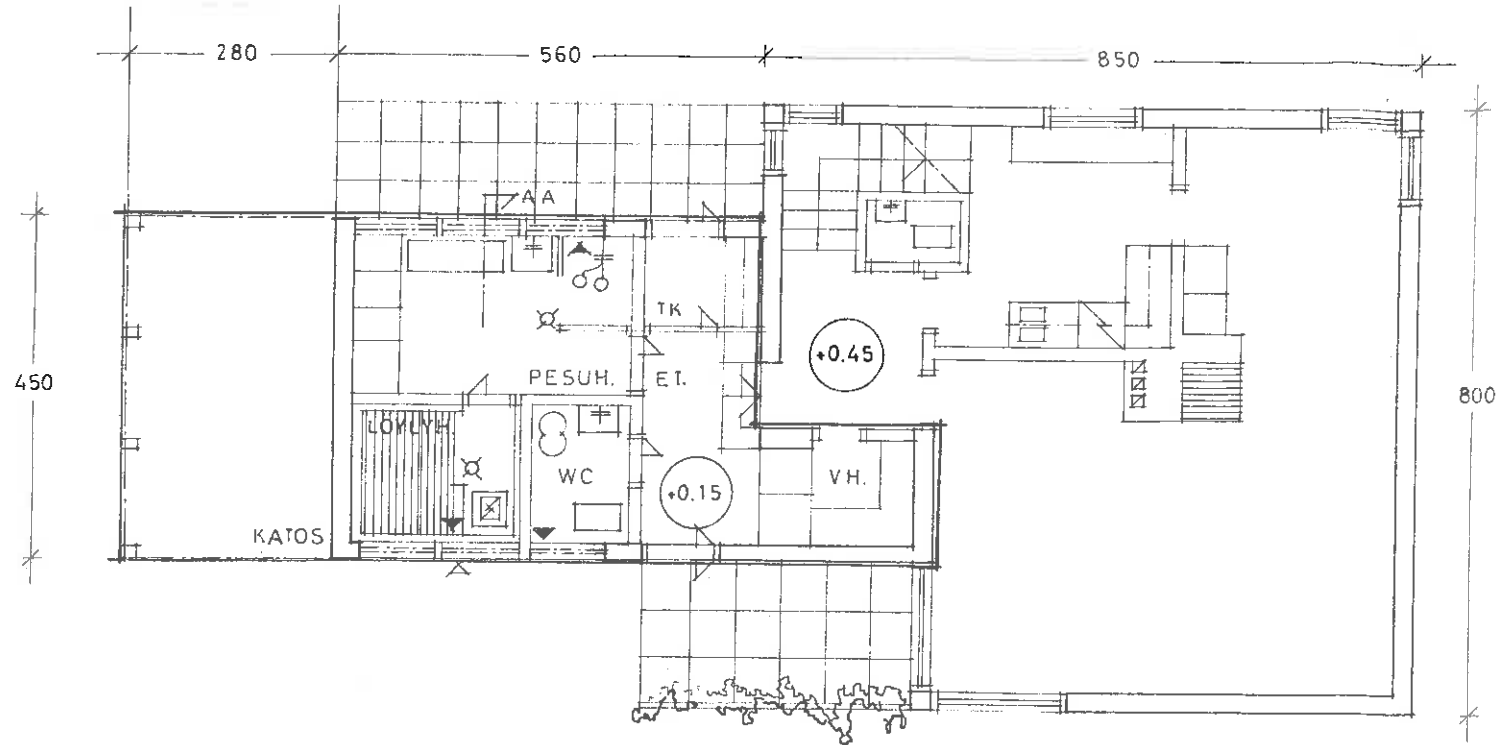


ITÄÄN

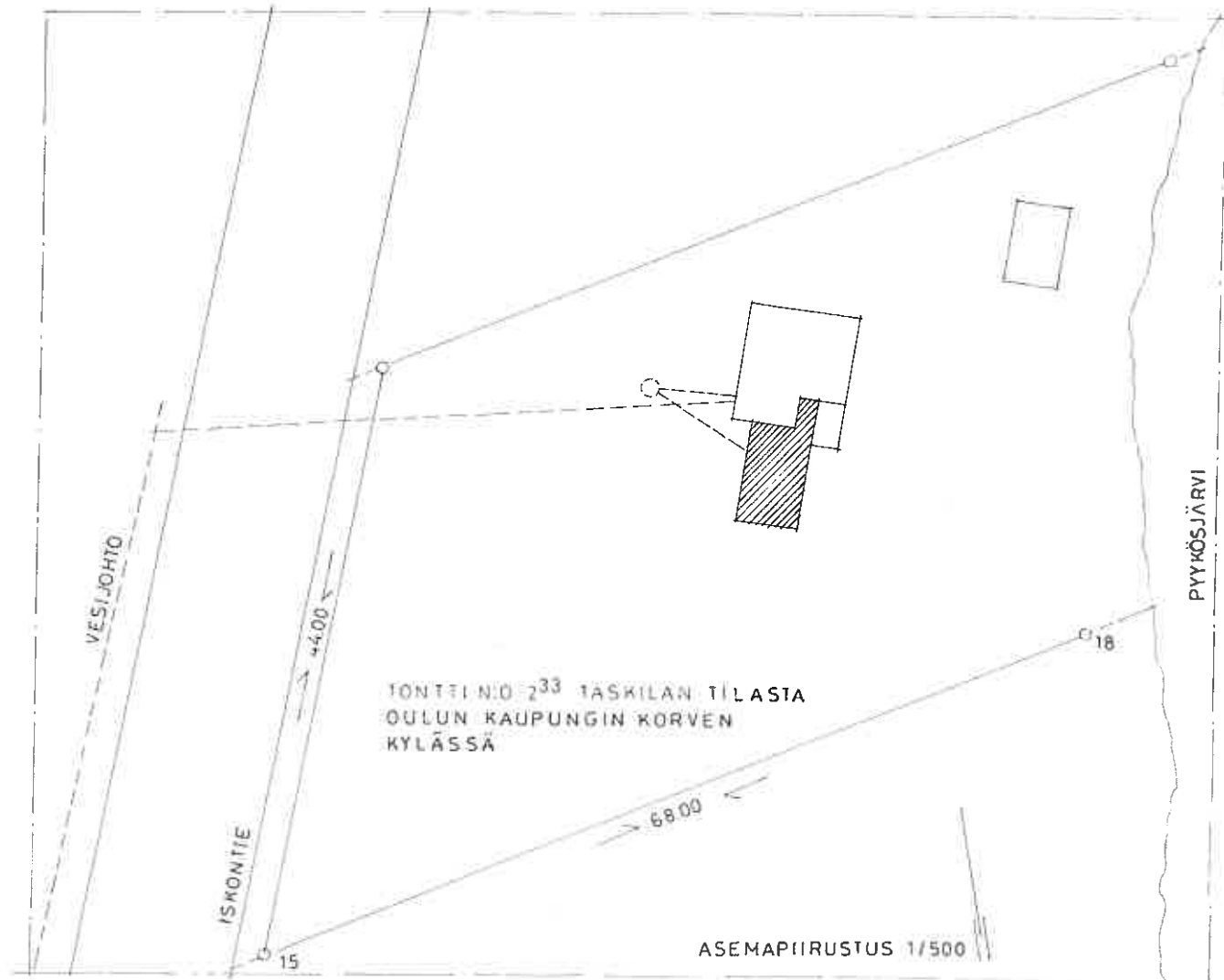


LEIKKAUS A-A





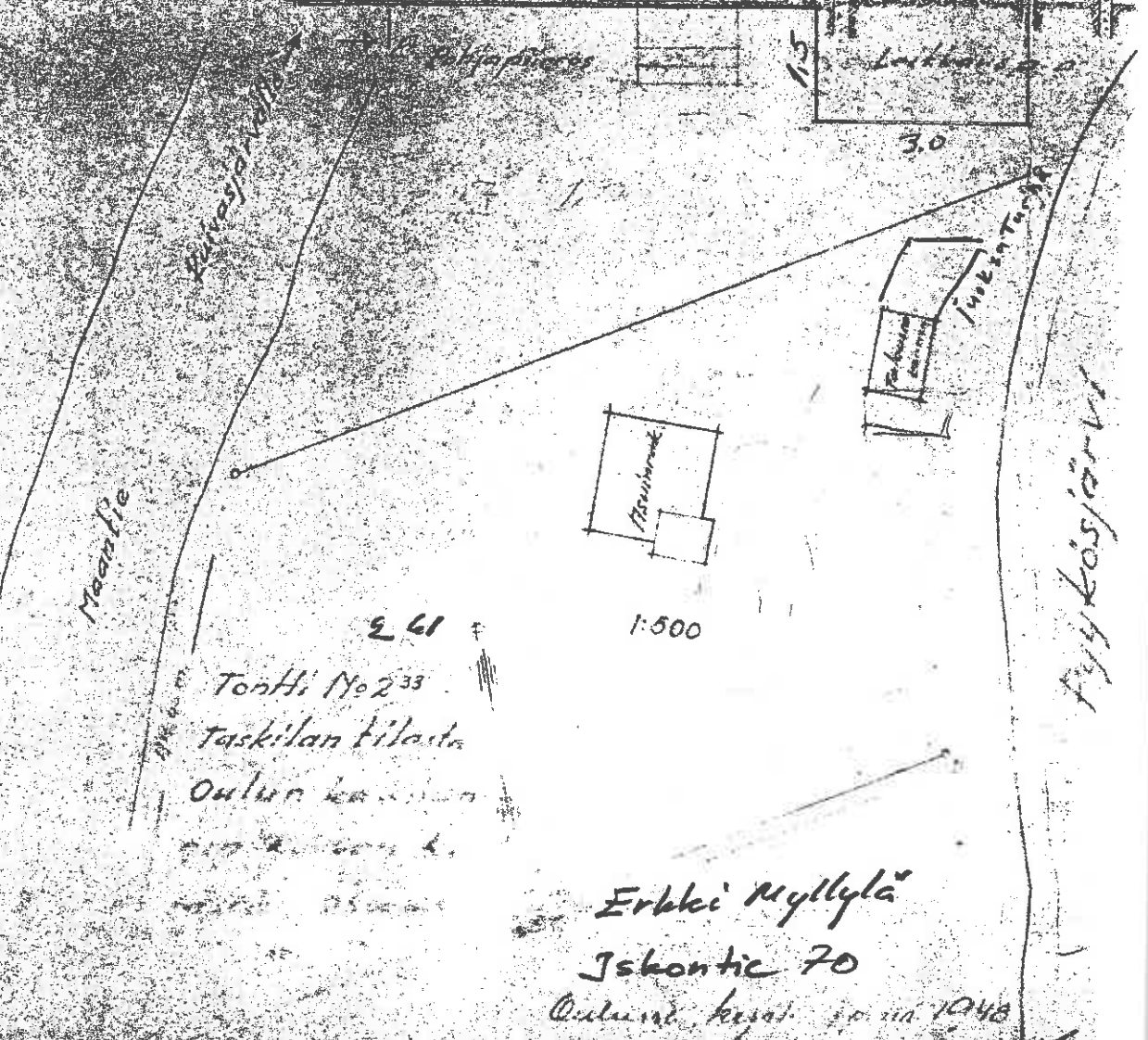
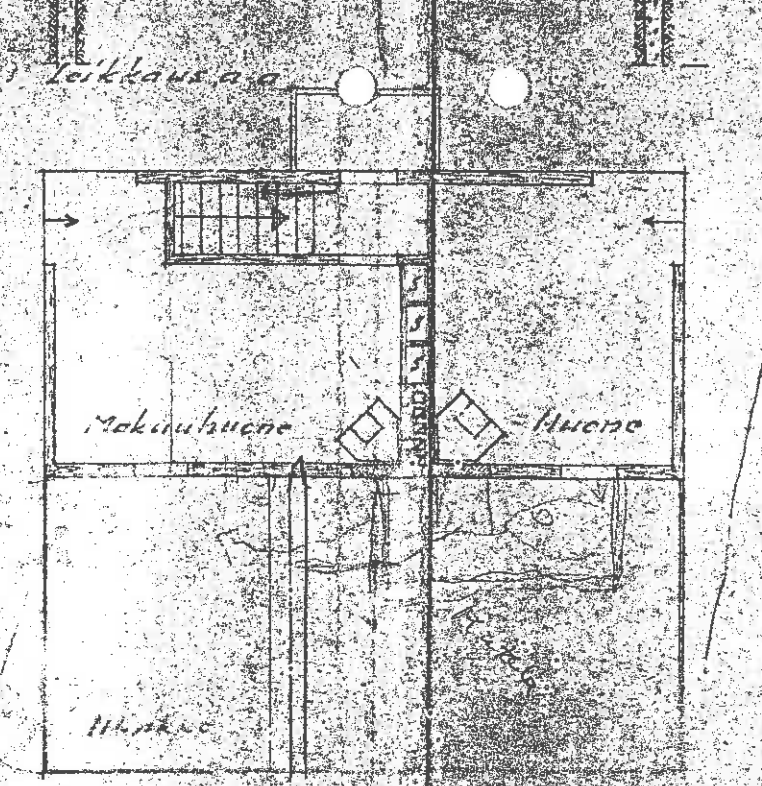
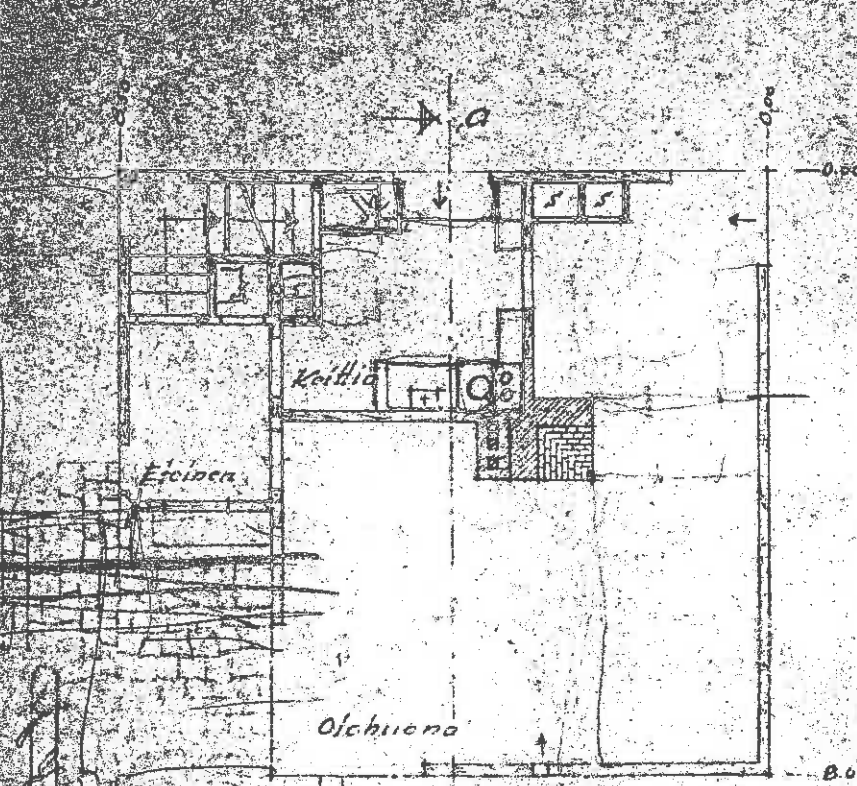
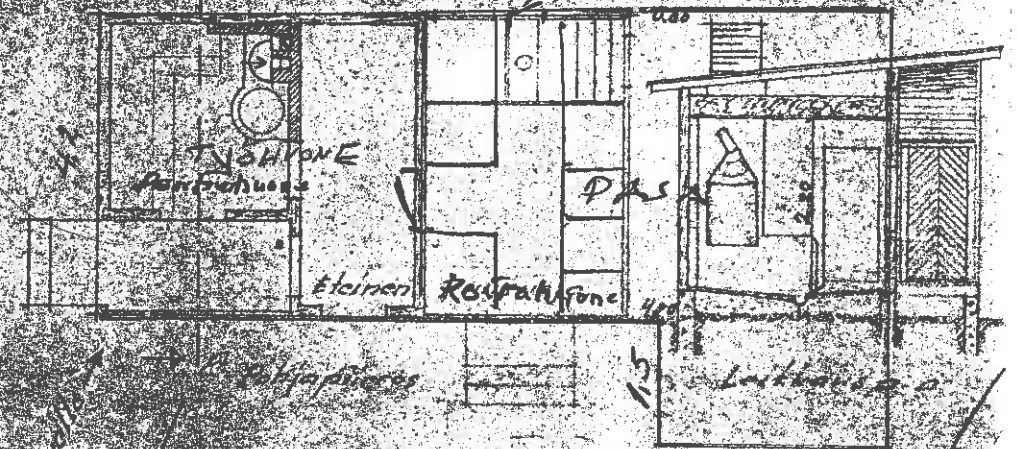
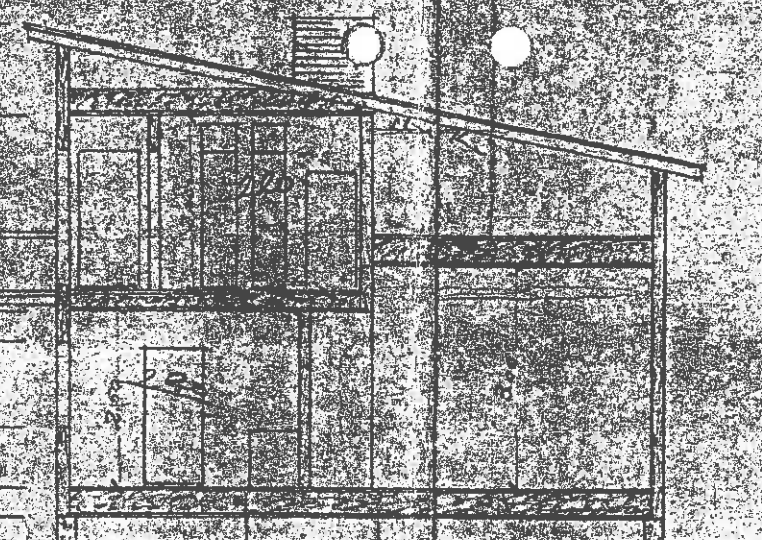
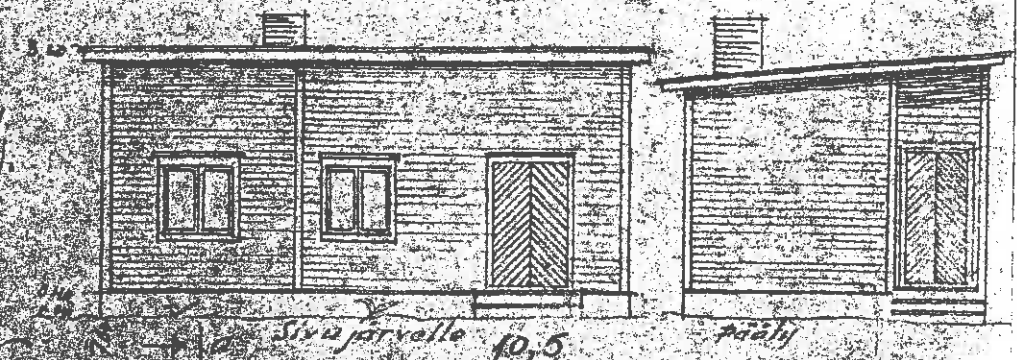
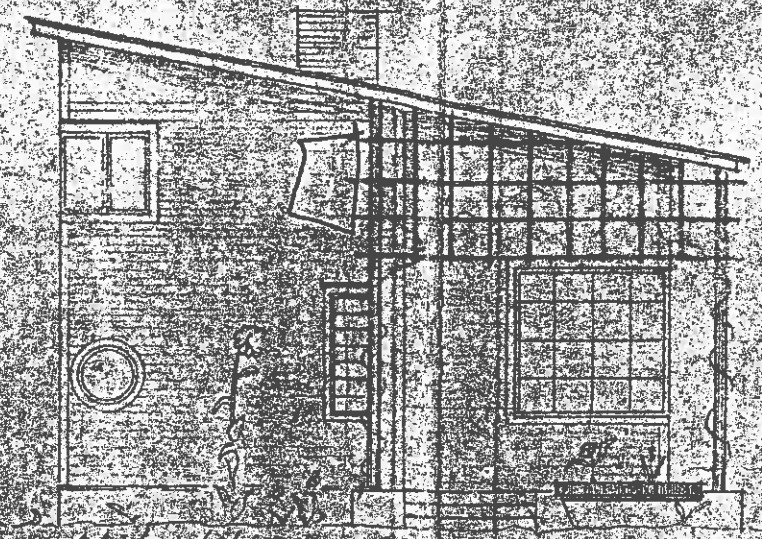
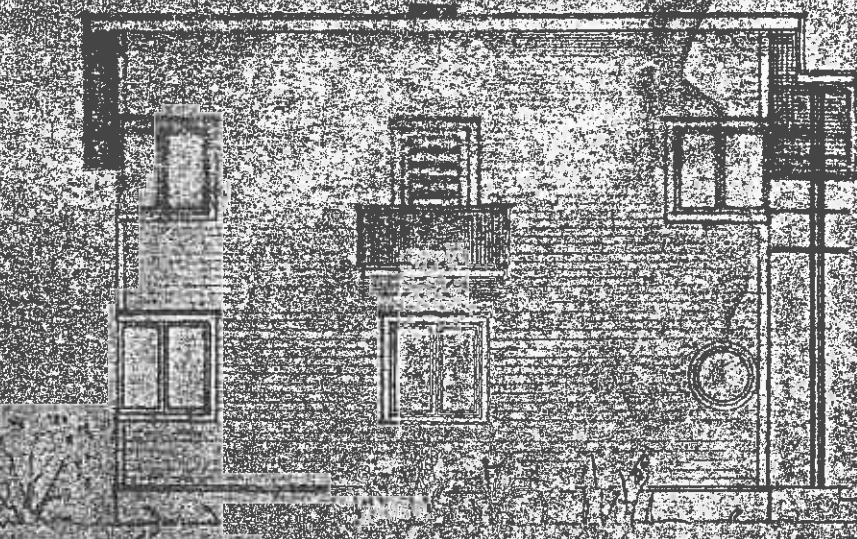
VESIKATTO: 2x BITUMIHUOPA SIROTTEELLA  
 JULKISIVUT: VAAKALAUDOITUS  
 SOKKELI: PUHTAAKSIVALETtua BETONIA



OULU ERKKI MYLLYLÄ  
 JULKISIVUT, POHJA, LEIKKAUS MK 1/100  
 LISÄRAKENNUS  
 OULU 19.6.1971.  
 SUUNNITTELU JUHA PALOVAARA

Piirustus omakoti- ja talousrakennusta varten Pyykösjärven rannalle tontille No 23 taskilan tilasta

Talousrakennus



Erkki Myllylä  
 Iskontie 70  
 Oulun kaupunki 10.11.1948  
 Arkkitehti

Alkuperäiset kuvat G-papereiden välissä.



10/10/72

