

A background photograph of several young children at an outdoor festival. They are wearing hats and sunglasses, and many have their arms raised in the air. The scene is bright and sunny.

# Pre-primary education in Oulu 2025-2026

8.1.2025

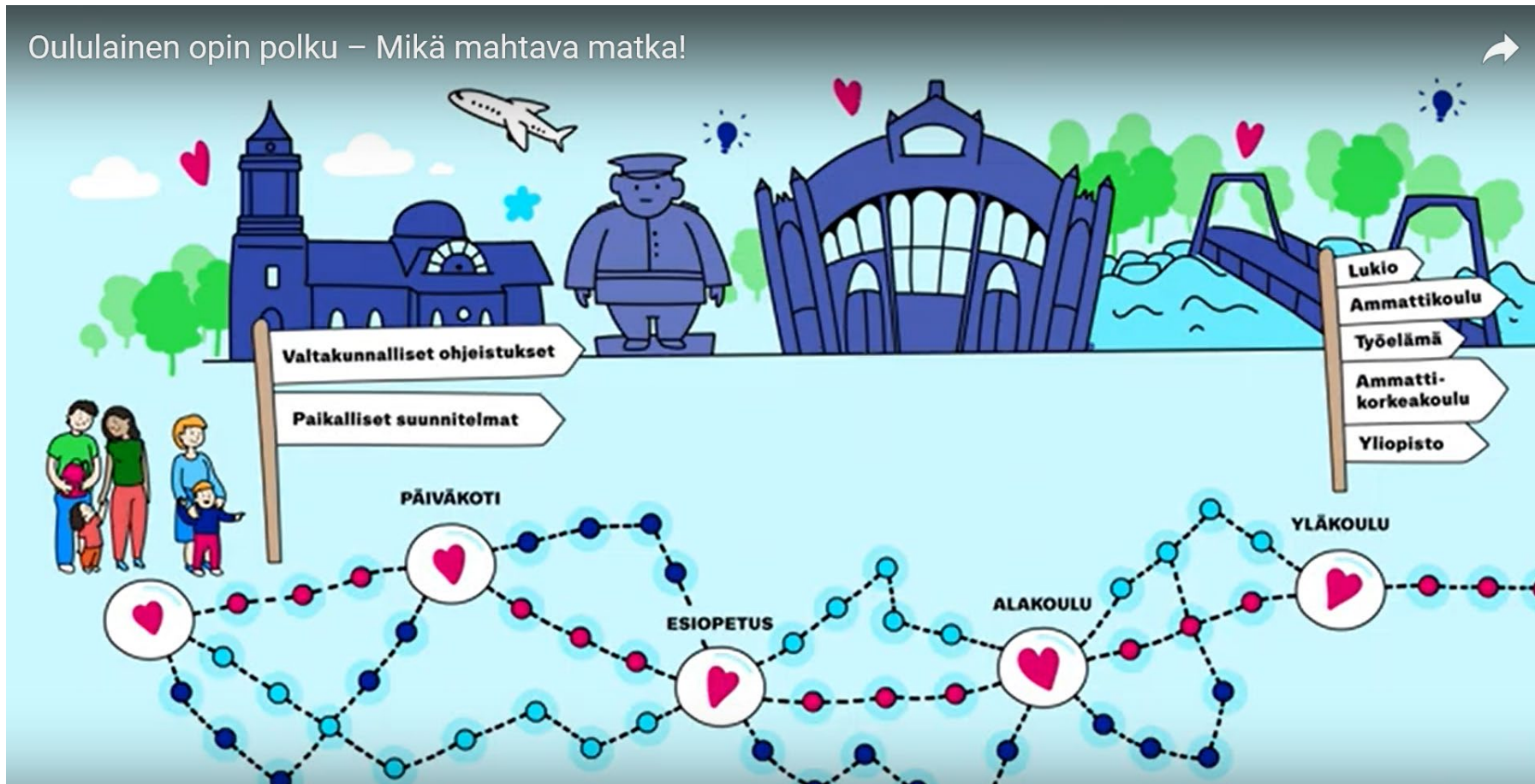


SIVISTYS- JA  
KULTTUURIPALVELUT

Info for guardians 8.1.25

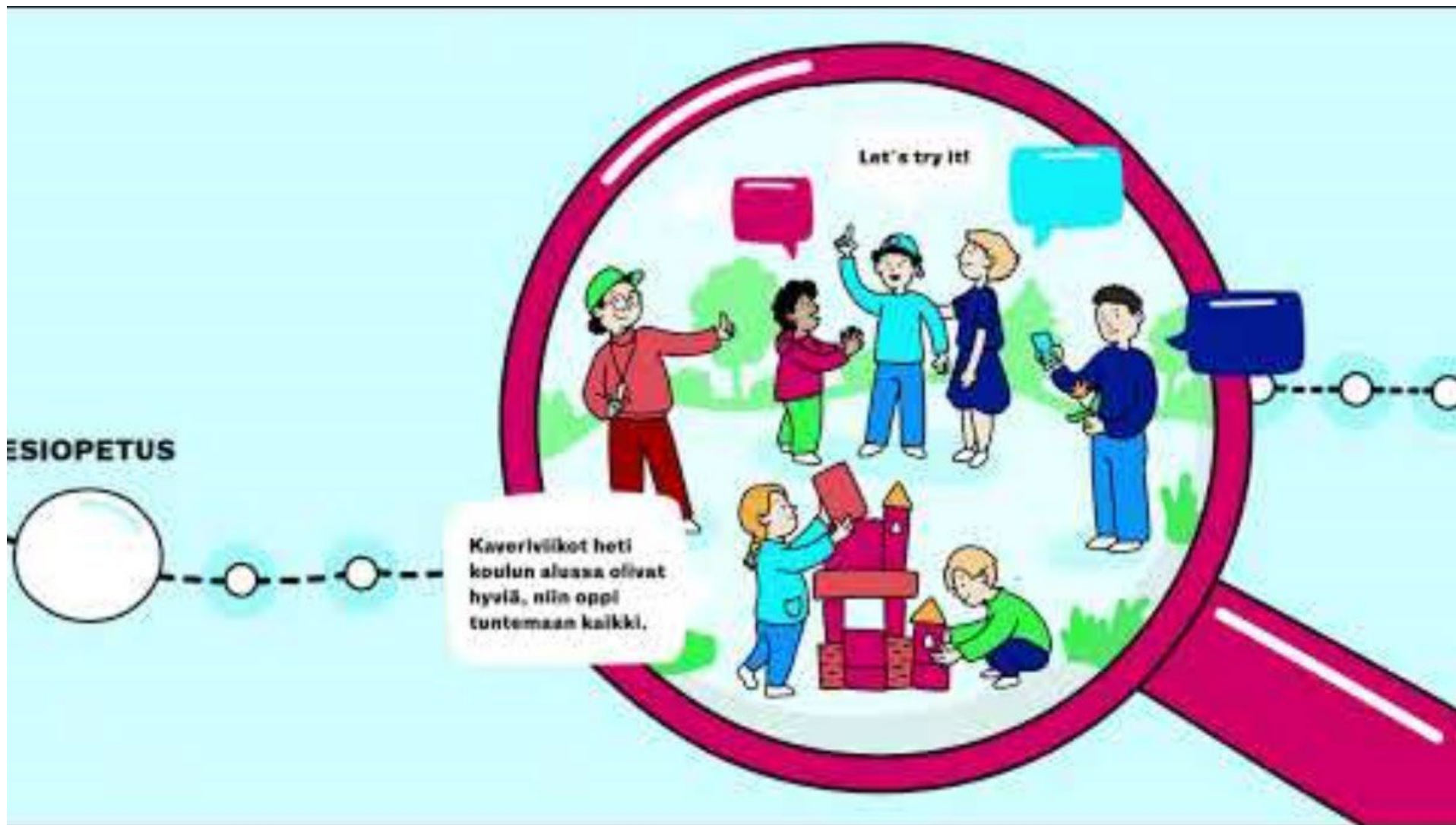
OULU

# Welcome to a unified path of growth and learning!





# Tervetuloa yhtenäiselle kasvun ja opin polulle!





# What is pre-primary education? Info evening

**The event starts at 18.00 pm and will be held in Finnish**

**Info's presentation material in English can be found on our website**

**Your microphone and camera are muted by the organizer**

## **Questions and commenting**

- You can post questions or comments in the conversation window (speech bubble).
  - Your questions and comments will be visible to all participants in real time, along with your name or nickname. If you don't see action buttons on your mobile device (e.g. chat window), tap the menu at the bottom (three dots) or tap the screen once to see them.
- General questions and comments will be answered in Finnish after the presentations .
- If you have private questions concerning your child or family, contact your child's daycare center staff or contact early childhood education service guidance ([varhaiskasvatus@ouka.fi](mailto:varhaiskasvatus@ouka.fi)).



# What is pre-primary education? info evening

## **18.00 Opening remarks**

Director of early childhood education Pirjo Koret

## **18:05 What is pre-primary education?**

Early childhood education service manager Elina Väisänen

## **18:15 What changes when preschool begins?**

Early childhood education teacher, preschool development teacher Pirita Niemelä

## **18.20 Registration for pre-primary education**

Early childhood education service manager Kirsi Ranki

## **18.30 Compilation and answering of questions**

A recording of the event and a summary of the most common questions will be available [ouka.fi/esiopetus/mita-esiopetus.on](https://ouka.fi/esiopetus/mita-esiopetus.on)

# Preschool education is part of the children's school path, which is complemented by early childhood education



The preschool year is an important and expected stage of a child's life. When a child reaches the age of 5-6 years, he gradually prepares himself during the period from the world of early childhood towards the world of a small schoolchild.

Preschool children are eager to learn new things and ready to face challenges. They are also increasingly aware of their own learning.

Statutory pre-primary education is intended for all children under school age one year before the start of compulsory education. It is important that all children attend preschool education and parents support the child on this learning journey.

Congratulations and enthusiasm and joy to all future preschoolers and their parents!



*päiväkodin esiopetusryhmän Intoa ja iloa eskarista!*





# What is pre-primary education?



**SIVISTYS- JA  
KULTTUURIPALVELUT**





# What is pre-primary education?

Pre-primary education is free education that children receive in the year preceding compulsory education. Early childhood education, preschool education and basic education form a coherent and consistently progressing growth and learning path that supports children's development and learning. Preschool education is an important period in a child's life, as it offers many new experiences and opportunities for learning new things

In preschool education, children get to get excited, try new things and learn in a fun way. Preschool education offers opportunities for diverse interaction and strengthening social skills. Play in its various forms is an essential part of preschool activities.

The aim of pre-primary education is to promote the child's growth, development and learning conditions in cooperation with homes and guardians, and to strengthen the child's positive self-image and perception of oneself as a learner.

OPH: Welcome to preschool! <https://youtu.be/EZHsICKZnIM>





# The value base of preschool education

Preschool education is based on the concept of the intrinsic value of childhood – every child is **unique** and **valuable** just as they are.

The child has the right to:

- to be heard, seen, considered and understood, both as an individual and as a member of a community
- learn and build their perception of themselves and the world according to their own starting points
- experience appreciation for one's own differences and opinions
- learn through play and enjoy what they have learned
- participate in doing things together and building their learning environment
- express themselves and their thoughts, and try and learn new things
- receive good instruction, including encouraging feedback and fair treatment

# Pre-primary education



- The scope of preschool education is at least 700 hours (an average of four hours per day). A day may include no more than five hours of pre-primary education.
- Pre-primary education, learning materials and equipment used in teaching, and the necessary pupil welfare are free of charge.
- Children are provided with a free meal every day of preschool education.
- If necessary, the child has the right to receive free of charge the interpretation and assistant services, other teaching services and special aids required for participation in teaching.
- Children are also entitled to free transport if the distance is more than five kilometres or if the journey is too difficult, strenuous or dangerous for the child.
- Preschool education time varies from unit to unit.



# Preschool operating hours in the school year 2025-2026

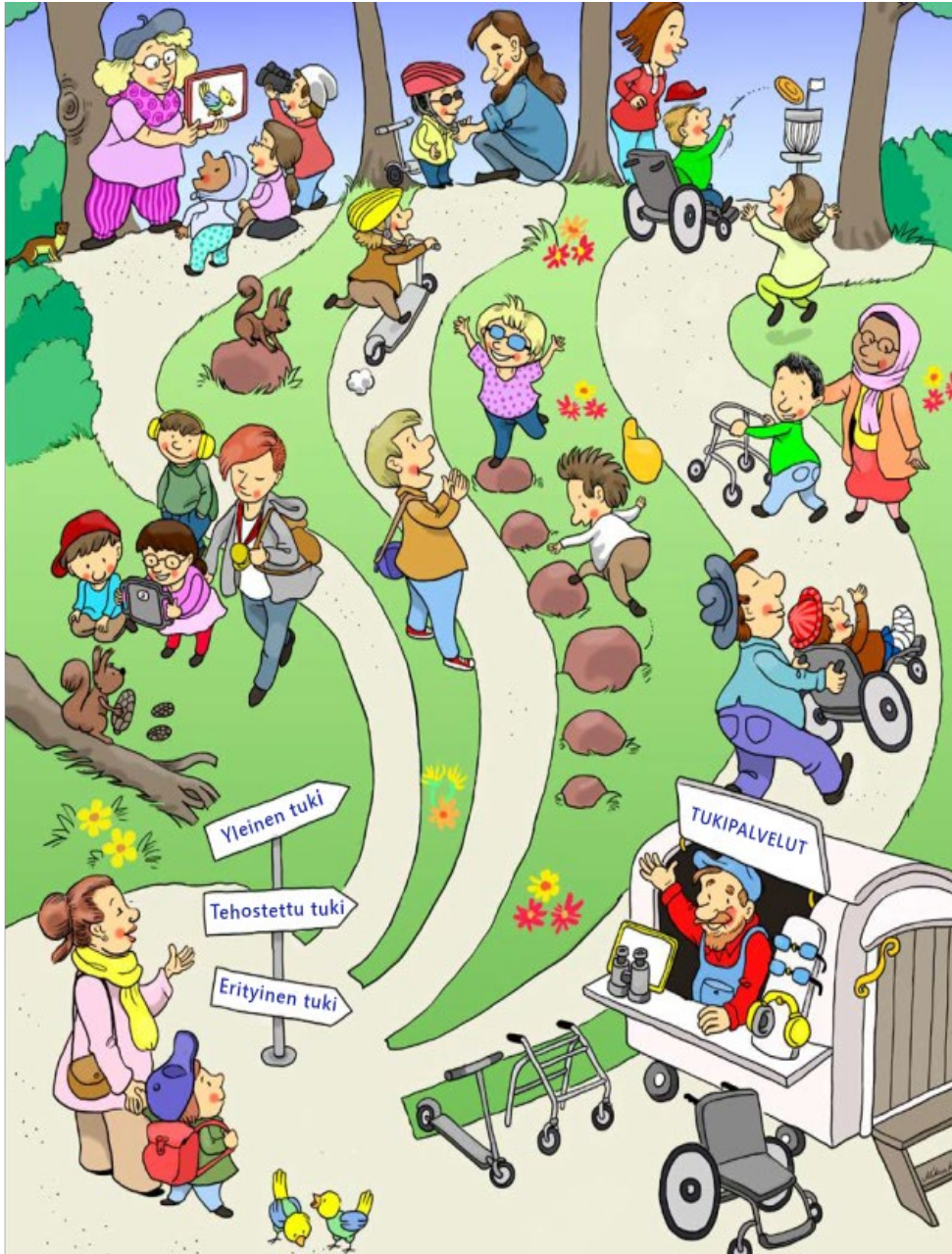


**Autumn semester 11.8. – 19.12.2025**

**Spring semester 12.1. – 29.5.2026**

## **Pre-primary education is not organized:**

- Autumn break 20.10. – 24.10.2025 (week 43)
- Independence Day 6.12.2025
- Christmas vacation 20.12.2025 - 11.1.2026
- Winter break 2.3. – 6.3.2026 (week10)
- Easter 3.4.-6.4.2026
- May Day 1.5.2026
- Ascension 14.5.2026 and the friday after that 15.5.2026



# Support for growth and learning



- Pre-primary education plays an important role in the early detection of children's growth and learning support needs, in providing support and, at the same time, in preventing difficulties.
- In pre-primary education, children receive support as part of the child's everyday life and daily early childhood education.
- Children have the right to receive the support required for development and learning as soon as the need for support arises.
- If necessary, the child's support continues in basic education. The need for support and the forms of support will be reviewed at the beginning of comprehensive school education.
- In pre-primary education, your child is covered by student welfare. The child can receive health care, social worker and psychological services.



# Compulsory pre-primary education

The obligations guiding the organisation of pre-primary education are based on the Basic education act and decree, the pupil and student welfare act and the Basics of the Pre-primary education curriculum.

- **Municipalities** are obliged to organize pre-primary education for children living in their area in the year preceding compulsory education.
- **The guardian** must ensure that the child participates in pre-primary education or other activities that achieve the objectives of pre-primary education.
- Participation in preschool education becomes an entry in the child's study path (Koski).
- The principle is that children enrolled in pre-primary education participate in preschool education regularly so that the goals set for pre-primary education can be achieved.
  - Absence of 1-5 days is granted by the early childhood education teacher of the group, leave of more than a week is granted by the director of the daycare center.

# Documents guiding the content of pre-primary education

[Esiopetuksen opetussuunnitelman perusteet \(Opetushallitus\)](#)

[Oulun kaupungin esiopetuksen opetussuunnitelma](#)

Lapsen esiopetuksen oppimissuunnitelma (LEOPS)

[Oulun kaupungin varhaiskasvatussuunnitelma](#)



# ENTHUSIASM AND JOY FROM PRESCHOOL!

## Thoughts of preschoolers

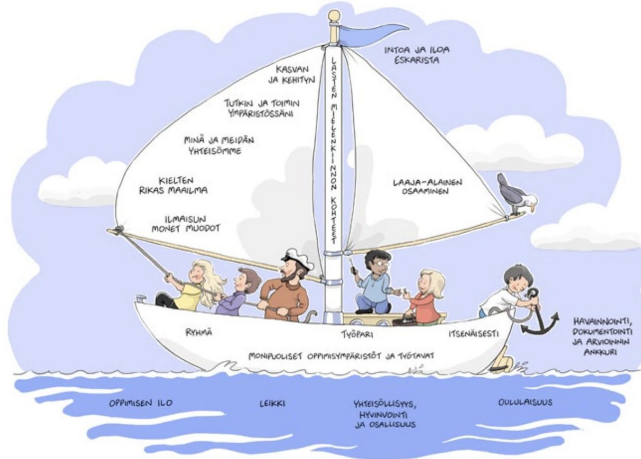


### What do you do in preschool?

- *We read books, play, play board games, draw*
- *Let's do tasks well*
- *Practicing letters from the screen*
- *Let's chatter*
- *Not throwing things and not breaking anything*

### What do you learn in preschool?

- *Letters, numbers, math, mother tongue*
- *Emotional and safety skills, you can say no!*
- *A little bit of everything is learned*



### What's it like in preschool? What's the best part?

- *Exercise is best*
- *Fun and fun*
- *Porridge is best*
- *Friends of course*

### Are we playing in preschool?

- *YES!*
- *I play quite a lot*

### What would you like to tell future preschoolers about preschool?

- *Greetings!*
- *It's worth listening, because otherwise you won't learn*



# The joy of learning and insight

In preschool education, students learn by playing, moving, exploring, doing work tasks, expressing themselves and performing art, among other things.

Children's previous experiences and skills are part of their learning path.

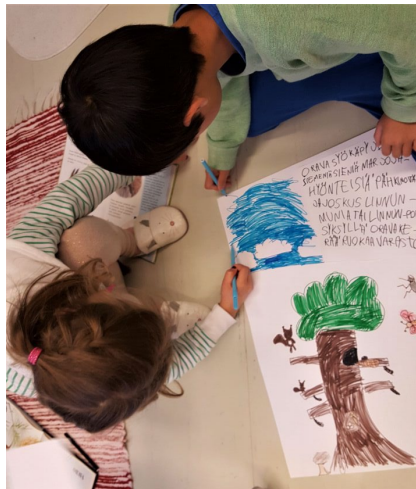
The preschool community encourages experimentation, trial and error, as well as the positive side of things. Successes and insights are celebrated together.

Preschool education is:

- Pedagogically planned, implemented and evaluated
- Meaningful for children
- Engaging children

Important are:

- Children's experiences of success – a sense of skill
- Positive feedback – praise
- Being accepted and heard
- A sense of inclusion







# Broad-based competence in preschool education

Formed by the totality of knowledge, skills, values, attitudes and will. Competence also means the ability to use knowledge and skills and to act as required by the situation.

The development of competence continues throughout life.

Broad-based competence consists of six interrelated areas:

- Thinking and learning
- Cultural competence, interaction and expression
- Self-care and everyday skills
- Multiliteracy
- ICT competence
- Participation, influence and sustainable lifestyle



Irmeli Halisen mallista muokattu  
esiopetukseen

# Common objectives and learning modules for teaching



The common objectives set for teaching arising from different fields of knowledge and skills are grouped into five areas in the curriculum:

- Many forms of expression
- The rich world of language
- Me and our community
- I explore and act in my environment
- I grow and develop

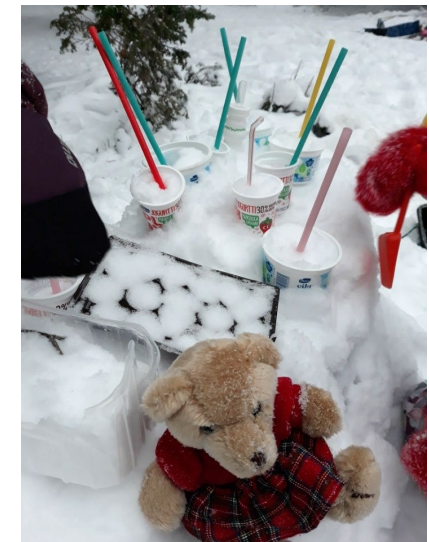
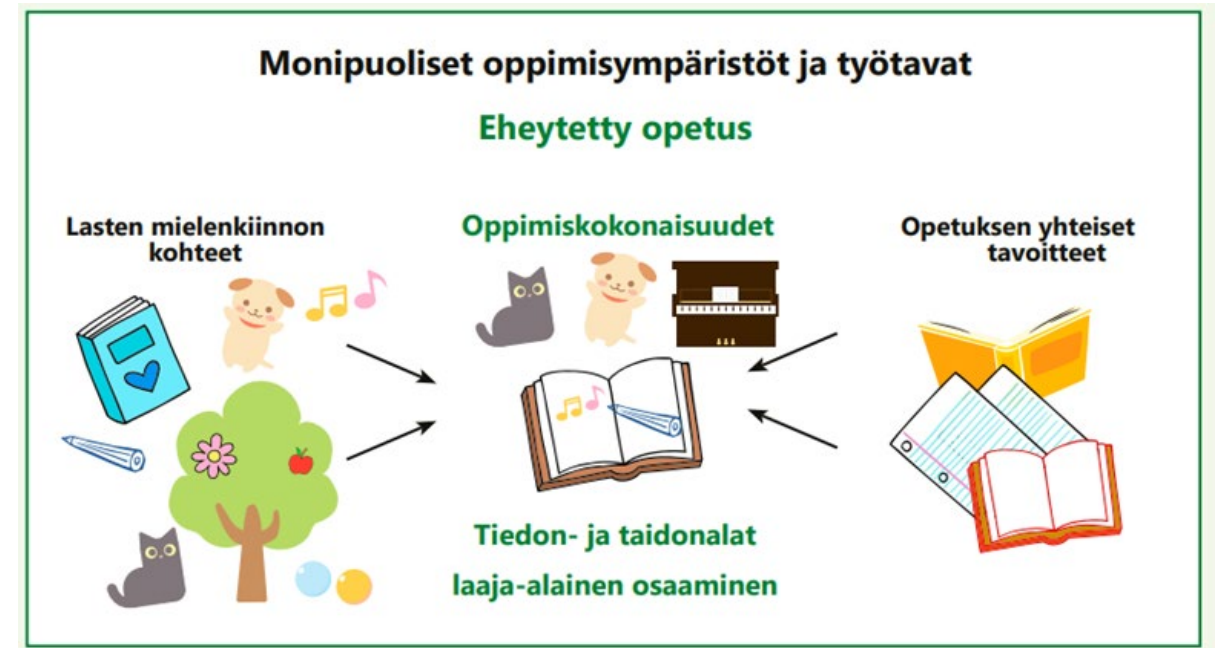


# Learning modules in preschool education

Functional preschool education includes diverse working methods whose task is to promote learning through play.

The starting points for the implementation of the learning modules are the children's interests and the common goals of teaching.

The aim is for children to learn new knowledge and skills to awaken a desire to learn more



# The main objectives of preschool education include, for example:



## Practicing emotional and interaction skills

- During the preschool year, emotional skills and their regulation are practiced in a wide range of interaction situations.
- Emotional and interaction skills are strengthened when children play and work in peer groups in safe and diverse learning environments.
- Children are guided to act with consideration for others in various conflict situations.

## Self-care skills

- In preschool education, students learn to take care of themselves, each other, their belongings and the environment.

## Practicing working skills

- Attention, concentration and control of one's own actions







## Cooperation between pre-primary and primary education

In Oulu, pedagogy for 5–8-year-olds supports children's smooth transition from early childhood education to preschool education and further to basic education.

A successful transition promotes children's sense of security and well-being, as well as their conditions for growth and learning.

The joint activities are carried out in close cooperation between the local school and the nearby daycare center, which is supported by the new principles of pre-primary admission.

The aim of contact cooperation in pre-primary and primary education is to jointly plan and organize cooperative learning modules in accordance with the curricula during the academic year. Cooperation is regular, systematic and goal-oriented. The aim is to work together and develop a common operating culture.

In Oulu, units engaged in close cooperation draw up a pedagogical plan for 5–8-year-olds.



# Preschool language year



- Preschool education introduces children to different languages. Languages are tasted, tried and introduced at the word level and simple phrases are learned.
- In particular, the aim is to get acquainted with the European languages offered by schools in the region as a first foreign language (A1 language) for first-graders.
- In Oulu, each school offers at least 2 languages: English, Spanish, French, Swedish, German, Russian
- The language selection of schools will be made already in the preschool year 2026 during March.

<https://kieltenopetusoulussa.wordpress.com/eskarin-kielivuosi/>



# Guardians' thoughts and expectations for the preschool year



- The importance of collaboration
- Child-centred approach
- Learning inspiring activities
- Close cooperation with schools and youth facilities
- Versatility of operations
- Playfulness
- Learning through play
- Practicing group skills
- Strengthening your working skills

In the Teams discussion section, write down your expectations and thoughts for the upcoming preschool year.



# Preschool enrolment



**SIVISTYS- JA  
KULTTUURIPALVELUT**

**OULU**



# Pre-primary education in Oulu 2025-2026



Pre-primary education is provided in pre-defined municipal daycare centers and a few schools, as well as an outsourced service provided by private daycare centers.

Preschool groups are formed according to the principles of preschool admission. All children are assigned a place in a preschool group in the surrounding area. If a child is already in early childhood education and care at a daycare center in his or her local area, which also has a pre-primary education group in the autumn, he or she may continue in the same daycare center.

**Preschool places have been planned regionally to enable cooperation with the local school.**

Guardians can also apply for a so-called parental allowance for their child. a secondary place in a different area or in a daycare center offering alternative pedagogy/language options. Preschool education can be admitted to another area after the area's own children have been grouped, if there is room left in the groups. Secondary pre-primary education should not cause the need to establish a new group. Guardians are responsible for transportation to secondary preschool places, even if the journey is long.

Preschool units can be seen [www.ouka.fi/esiopetus](http://www.ouka.fi/esiopetus)

# Places of preschool education in the northern region



- Aseman päiväkoti (Haukipudas)
- Herukan päiväkoti
- Jatulin Tarhan päiväkoti (Haukipudas)
- Kellon päiväkoti
- Kiviniemen päiväkoti
- Kolistajantien päiväkoti (Ritaharju)
- Kuivasjärven päiväkoti
- Kuivasrannan päiväkoti
- Linnunrata (Kellossa)
- Länsituulen päiväkoti (Haukipudas)
- Touhula LystiVekara (Ritaharju)
- Martinniemen päiväkoti
- Palokan päiväkoti
- Pilke Usva (Pateniemi)
- Pilke Wilhelmiina (Haukipudas)
- Pöllökankaan päiväkoti
- Riekonmarjan päiväkoti
- Ritaharjun päiväkoti
- Ruiskukan päiväkoti (Rajakylä)
- Taikametsäntarha (Haukipudas)
- Tuulikellon päiväkoti (Teknologiakylä)
- Touhula Ritaharju

# Places of preschool education in the eastern region



- Haapalehdon päiväkoti
- Hintan päiväkoti
- Hiukkavaaran monitoimitalon päiväkoti Taikapolku
- Hönttämäen päiväkoti
- Kiiminkijoen päiväkoti
- Laivakankaan päiväkoti
- Mansikkamaa (Kiiminki)
- Metsämansikka (Kiiminki)
- Myllyojan päiväkoti
- Muurahaisen päiväkoti (Yli-Ii school)
- Pilke Pikkukiulu (Kiulukangas)
- Runokerä (Kirkkokangas)
- Pilke Soittajankangas
- Saarelan päiväkoti
- Satusiipi (Haapalehto)
- Soittajankankaan päiväkoti
- Talvikankaan päiväkoti
- Tipitii (Alakylä)
- Touhula Kivikkokangas
- Touhula Satumetsä (Jääli)
- Vaskikankaan päiväkoti
- Vekara-ahon päiväkoti (Kiiminki)
- Vesalan päiväkoti
- Välikylän päiväkoti
- Ylikiimingin päiväkoti

# Places of preschool education in the central region



- Ainolan päiväkoti (Myllytulli)
- Allinpuiston päiväkoti (temporarily Svaaninsuo)
- Heinätorin päiväkoti( Keskusta)
- Kaarnalaiva (Lintula)
- Kaijonharjun päiväkoti
- Kastellin monitoimitalon päiväkoti
- Kisakentän päiväkoti (Tuira)
- Koskelan päiväkoti
- Merikosken päiväkoti (Tuira)
- Meri-Toppilan päiväkoti
- Mäntylä-Snellman -päiväkoti (Mäntylä)
- Pikku-Ainon päiväkoti (Myllytulli)
- Pikku-likan päiväkoti (Heinäpää)
- Puolivälinkankaan päiväkoti
- Sampolan päiväkoti (Kaijonharju)
- Touhula Toppilansalmi
- Villentarha (Isko)
- Värtön päiväkoti



# Places of preschool education in the southern region



- Heikkilänkankaan päiväkoti
- Kaakonpojan päiväkoti (Kaakkuri)
- Kirkonkylän koulu (Oulunsalo)
- Knuutilankankaan päiväkoti
- Kuukkelin päiväkoti (Kaakkuri)
- Lämsänjärven päiväkoti
- Maikkulan päiväkoti
- Metsokankaan päiväkoti
- Merikotkan päiväkoti (Kaukovainio)
- Metsälinna (Kaakkuri)
- Mäntypellon päiväkoti (Oulunsalo)
- Neptunus (Oulunsalo)
- Niemenrannan päiväkoti (Oulunsalo)
- Oulunlahden päiväkoti
- Pikkulinna (Kaakkuri)
- Pilke Viljami (Kaakkuri)
- Pitkäkankaan päiväkoti (Oulunsalo)
- Salonpään päiväkoti (Oulunsalo)
- Sarasuon päiväkoti (Kaakkuri)
- Savotta-aukion päiväkoti (Metsokakangas)
- Touhula Hiirulaisenkuja (Hiironen)

# Pre-primary education related to alternative pedagogy and language options offered as secondary pre-primary education places:



- Oulu English playschool (Intiö)
- Musiikkipäiväkoti Taikatahti (Keskusta)
- Oulun Montessoripäiväkoti (Keskusta)
- Päiväkoti Saksanpähkinä (Keskusta)

## **Omalla järjestämisluvallaan esiopetusta järjestävät myös:**

- Oulun steinerkoulun päiväkodit [Steinerpäiväkoti Punavarpen](#) (Intiö) ja [Steinerpäiväkoti Taivonkaari](#) (Puolivälinkangas)
- [Svenska Barntädgården](#) (Keskusta)
- [Oulun kristillinen koulu](#) (Toppilansaari)

# Preschool enrolment 7.-20.1.2025



- All children enroll in preschool education.
- Registration is done electronically through the eVaka system [varhaiskasvatus.ouka.fi](https://varhaiskasvatus.ouka.fi).
- If, in addition to pre-primary education, the child also needs early childhood education, this must be noted on the registration form.
  - If the child is currently in a private service voucher daycare centre, a separate application for early childhood education and care required at the beginning of August before the start of pre-primary education is submitted in eVakka.
  - For children transferring from municipal daycare centres to pre-primary education, early childhood education and care will continue uninterrupted also in August.
  - More information on the city's website: [Esiopetus | Oulun kaupunki](https://esiopetus.ouka.fi)



- If online registration is not possible for some reason, you can also fill in a paper form, which is available at all daycare centers, Oulu10 service points and the Environment house. A printable version can be found on the city's website.
- If, for some reason, the child does not participate in organized pre-primary education, the guardian must ensure that the child participates in other activities that meet the objectives of pre-primary education. The responsibility for participation and its costs, as well as for achieving the goals, lies with the parents.
  - It should be noted that this is not, however, pre-primary education, and participation is not recorded in the child's learning path in the national Koski information pool.



# Principles of admissions to preschool education



- If a child is in early childhood education and care in the vicinity of the future school, the pre-primary education place will be allocated from the same daycare center arranging pre-primary education where the child has already been in early childhood education.
- If no pre-primary education is provided at the child's early childhood education center or the child is not yet in early childhood education, the pre-primary education place is assigned from the unit of the local pre-primary education area according to the child's home address.
- If pre-primary education involves, for example, the need for evening, weekend, shift care or special support, a pre-primary education place can be allocated from a pre-primary education unit other than that indicated in the child's home address
- A daycare center to which the municipality must arrange transport is not designated as a place of pre-primary education if there is a daycare center in the area to which there is no obligation to arrange transport. If a daycare center to which the municipality must arrange transport must be designated as a pre-primary education place, a pre-primary education place will be designated to which transport can be arranged primarily by public transport.
- If a child moves from one area to another in the middle of a preschool year, a pre-primary education place is granted, if possible, from a pre-primary education unit according to the child's new home address



## **Order of priority for admission to pre-primary education when applying for a secondary pre-primary education place or when there are more enrolments than pre-primary education places:**

1. There is room in the pre-primary education unit after primary admissions
2. Health or other special reason
3. Preschool trip (distance to preschool place is as short as possible)
4. The need for school transport
5. Sisterhood plea
6. Other possible causes



# Decision on the child's preschool place

- The decision on the child's future preschool place is **primarily sent electronically** via the suomi.fi service. If the family has not taken the electronic service into use, the decision will be mailed by letter at the end of March at the latest. The decision includes the name of the daycare center or school and the start date of pre-primary education.
- In the spring, the pre-primary education units will arrange an opportunity to get acquainted, and at that stage at the latest, the child's future pre-primary education group will also be known.

# Fees for early childhood education and care related to pre-primary education



## **Preschool education is free of charge for everyone (4 h/day)**

- If a child needs early childhood education and care in addition to pre-primary education, a maximum of 60% of the full-time early childhood education fee will be charged. The fee is determined according to the family's income and the extent of early childhood education needed.
- The fees for early childhood education related to pre-primary education purchased from a private daycare center are determined in the same way, because the city purchases the service from private providers. Any fee reductions are also the same. The early childhood education bill comes from the city, the company does not charge families any fees.



If you would like information on, for example, choosing the most suitable place for pre-primary education, arranging early childhood education or other related matters, you can contact early childhood education service guidance.

- E-mail [varhaiskasvatus@ouka.fi](mailto:varhaiskasvatus@ouka.fi) reply to messages within three working days.
- The helpline operates from Tuesday to Thursday between 9.00-12.00 at 08 558 45300 / dial number 1.
- Personal service without an appointment is also available on site at the Environment house (Solistinkatu 2) on weekdays from 8 am to 4 pm.

# Questions and answers



The general questions published in Q&A will be reviewed together. The questions and answers will also be published on the city's website.

If you have private questions concerning your child or family, contact your child's daycare center staff or contact early childhood education service guidance.





# *Thank you!*

Recording and compilation of the most common questions  
Together with the answers, you can see: [ouka.fi/esiopetus/mita-esiopetus](https://ouka.fi/esiopetus/mita-esiopetus).